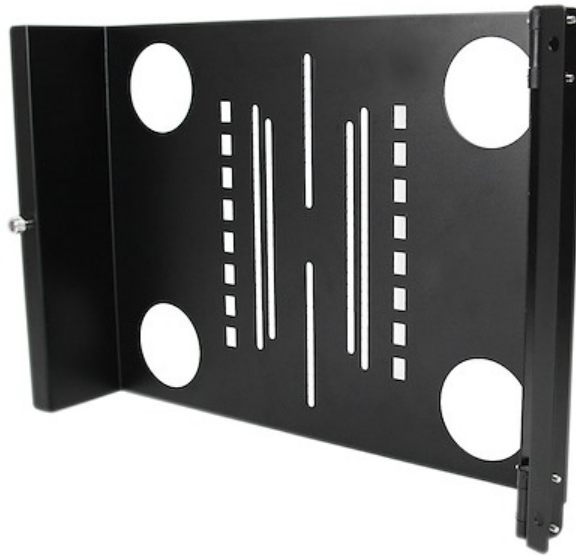


## Universal Swivel VESA LCD Mounting Bracket for 19in Rack or Cabinet

**Product ID:** RKLCDDBKT



The RKLCDDBKT Universal Swivel VESA LCD Mounting Bracket for 19in Rack or Cabinet lets you mount almost any retail LCD or touch screen into a server rack/cabinet, with tilt and swivel motion for maximum visible range. This TAA compliant product adheres to the requirements of the US Federal Trade Agreements Act (TAA), allowing government GSA Schedule purchases.

Hinged on one of the rail mounts, the LCD bracket can be released to swing out from the rack, as well as offering vertical tilt allowing for perfect placement of your LCD panel with minimal adjustment.

Constructed from solid cold pressed steel (SPCC), the LCD mounting bracket is designed to support 75mm and 100mm VESA mounted panels, and meets ANSI/EIA RS-310-D rack mounting standards.

Backed by a StarTech.com Lifetime warranty.

## Certifications, Reports and Compatibility

### Applications

- Ideal for installing a retail LCD monitor into an existing Rack or Cabinet
- Installing a touch screen display into a rack or cabinet while retaining access behind it with the swing it out arm
- Can be mounted at any height in the rack; with swivel bracket the screen is always visible

### Features

- 100mm and 75mm VESA mounting hole pattern

- Meets ANSI/EIA RS-310-D standards
- TAA compliant for GSA Schedule purchases
- Constructed from solid steel at 2.0mm thick, this bracket is designed for durability

---

#### Hardware

Warranty	Lifetime
Frame Type	Steel
U Height	7U
Cable Management	No
Industry Standards	EIA RS310-D

---

#### Performance

Weight Capacity (Stationary)	35.4 lb [16 kg]
General Specifications	VESA Compliance: 100x100mm 75x75mm

---

#### Physical Characteristics

Color	Black
Material	Steel
Internal Width	16.7 in [42.5 cm]
Product Length	0.0 in [0.0 mm]
Product Width	0.0 in [0.0 mm]
Product Height	0.0 in [0.0 mm]
Weight of Product	6.3 lb [2.9 kg]

---

#### Packaging Information

Package Length	19.3 in [48.9 cm]
Package Width	12.7 in [32.3 cm]
Package Height	4.2 in [10.6 cm]



Shipping (Package) Weight	7.0 lb [3.2 kg]
------------------------------	-----------------

---

**What's in the  
Box**

Included in Package	Mounting back plate
	LCD Swivel Mounting Bracket
	Package of assembly screws (4 x M5*16 Panel screws, 4 x M5 Cage nuts, 2 x M4*8 screws)
	Package of 4 LCD mounting Screws

---

***\*Product appearance and specifications are subject to change without notice.***

